



Channel	Name	Source	Mult	Box	Hole	Routing	Notes
1	Spare Wireless	Shure UR1		PM5D	1	D.O. to Dante Ch. 1	
2	Wisdom Wireless	Shure UR1		PM5D	2	D.O. to Dante Ch. 2	
3	Passion Wireless	Shure UR1		PM5D	3	D.O. to Dante Ch. 3	
4	Depression Wireless	Shure UR1		PM5D	4	D.O. to Dante Ch. 4	
5	Lust Wireless	Shure UR1		PM5D	5	D.O. to Dante Ch. 5	
6	Happiness Wireless	Shure UR1		PM5D	6	D.O. to Dante Ch. 6	
7	Love Wireless	Shure UR1		PM5D	7	D.O. to Dante Ch. 7	
8	Anger Wireless	Shure UR1		PM5D	8	D.O. to Dante Ch. 8	
9							
10							
11							
12							
13							
14							
15							
16							
17	Qlab 1/Ableton 1: Main Left	From Show Computer		Digi Grid Ch. 1		Mix Bus 1 - Main L	
18	Qlab 2/Ableton 2: Main Right			Digi Grid Ch. 2		Mix Bus 2 - Main Right	
19	Qlab 3/Ableton 3: Main Center			Digi Grid Ch. 3		Mix Bus 3 - Main Center	
20	Qlab 4/Ableton 4: Subs			Digi Grid Ch. 4		Mix Bus 4 - Subs	
21	Qlab 5/Ableton 5: Side Left			Digi Grid Ch. 5		Mix Bus 5 - Side L	
22	Qlab 6/Ableton 6: Side Right			Digi Grid Ch. 6		Mix Bus 6 - Side R	
23	Qlab 7/Ableton 7: Rear Left			Digi Grid Ch. 7		Mix Bus 7 - Rear L	
24	Qlab 8/Ableton 8: Rear Right			Digi Grid Ch. 8		Mix Bus 8 - Rear R	
25	Qlab 9/Ableton 9: Fly FX 1			Digi Grid Ch. 9		Mix Bus 9 - Fly FX 1	
26	Qlab 10/Ableton 10: Fly FX 2			Digi Grid Ch. 10		Mix Bus 10 - Fly FX 2	
27	Qlab 11/Ableton 11: Fly FX 3			Digi Grid Ch. 11		Mix Bus 11 - Fly FX 3	
28	Qlab 12/Ableton 12: Deck FX Left			Digi Grid Ch. 12		Mix Bus 12 - Deck FX-L	
29	Qlab 13/Ableton 13: Deck FX Right			Digi Grid Ch. 13		Mix Bus 13 - Deck FX-R	
30	Qlab 14/Ableton 14: Billboard FX Left			Digi Grid Ch. 14		Mix Bus 14 - Billboard FX-L	
31	Qlab 15/Ableton 15: Billboard FX Right			Digi Grid Ch. 15		Mix Bus 15 - Billboard FX R	
32	Qlab 16/Ableton 16: Actor Monitor			Digi Grid Ch. 16		Mix Bus 16&17 - Actor Mons	
32					Digi Grid Ch. 17		
33/34	Designer Lines	Tech Table Interface		TBD by House Engineer		Main L, R, Sub, Sur, Front Fills	
47	Director VoG	Shure AD2/SM58		PM5D	11	Mix Bus 11-13 & 16-17	
48	SM VoG	Rep		TBD by House Engineer		Main C, Actor Mons, DJ Mon.	

\*Indicates item that would need to be rented.

Directed By: Steve H. Broadnax III

Revised: 9/18/19

Baltimore Center Stage



Sound D  
info@m

Out	Name	Box/Slot	Hole	Destination	Speaker
<u>Mix Busses</u>					
Mix 1	Main Left		-	Matrix 1, 4, 5, 6	-
Mix 2	Main Right		-	Matrix 2, 4, 5, 6	-
Mix 3	Main Center		-	Matrix 3, 4, 5, 6	-
Mix 4	Subs		7		EAW 330 x2
Mix 5	HL Surrounds		8		Bose 101 x2
Mix 6	HR Surrounds		9		Bose 101 x2
Mix 7	HC Rear Surrounds		10		Bose 101 x2
Mix 8	Fly FX 1		12		Meyer UPJ*
Mix 9	Fly FX 2		13		Meyer UPJ*
Mix 10	Fly FX 3		14		Meyer UPJ*
Mix 11	Deck FX Left		15		Meyer UPJ*
Mix 12	Deck FX Right		16		Meyer UPJ*
Mix 13	Billboard FX-L		17		Meyer UB12*
Mix 14	Billboard FX-R		19		Meyer UB12*
Mix 15	Floor Actor Monitors		20		Meyer MM-4 x6*
Mix 16	Prosc Actor Monitors		22		UPJunior x2*
Mix 17					
Mix 18					
Mix 19					
Mix 20					
Mix 21					
Mix 22					
Mix 23	Recording Feed		21		
Mix 24	Backstage Monitors		18		
<u>Matrix</u>					
Matrix 1	Main Left		1		EAW JFX290 x 2
Matrix 2	Main Right		2		EAW JFX290 x 2
Matrix 3	Main Center		3		EAW JFX290 x 3
Matrix 4	Front Fills		4		Meyer MM-4 x6*
Matrix 5	Under Balcony Fills		5		Meyer MM-4 x12

<b>Matrix 6</b>	Balcony Fills		6		EAW JF60 x5
<b>Matrix 7</b>					
<b>Matrix 8</b>					
<u>Direct Outs</u>					
<b>Ch. 1</b>	Spare D.O.	Digi Grid	Digi Ch. 1	Digi Grid Ch. 1	Routed to Ableton for processing.
<b>Ch. 2</b>	Jerome Wireless D.O.	Digi Grid	Digi Ch. 2	Digi Grid Ch. 2	
<b>Ch. 3</b>	Brandon Wireless D.O.	Digi Grid	Digi Ch. 3	Digi Grid Ch. 3	
<b>Ch. 4</b>	Forrest Wireless D.O.	Digi Grid	Digi Ch. 4	Digi Grid Ch. 4	
<b>Ch. 5</b>	Reynaldo Wireless D.O.	Digi Grid	Digi Ch. 5	Digi Grid Ch. 5	
<b>Ch. 6</b>	Jody Wireless D.O.	Digi Grid	Digi Ch. 6	Digi Grid Ch. 6	
<b>Ch. 7</b>	Ryan Wireless D.O.	Digi Grid	Digi Ch. 7	Digi Grid Ch. 7	
<b>Ch. 8</b>	Garrett Wireless D.O.	Digi Grid	Digi Ch. 8	Digi Grid Ch. 8	
<b>Ch. 9</b>					
<b>Ch. 16</b>					
<u>Auxes</u>					
<u>SI</u>					

\*Indicates item that would need to be rented.

**Out Flow**

esigner: Mikaal Sulaiman

mikaal.com - 561.634.0334

Notes
Rep Position
Rep Position
Rep Position
Rep Position
Rep
Rep
Rep Position
Rep Position
Rep Position
Rep Position

Rep Position

Directed By: Steve H. Broadnax III

Revised: 8/23/19

Baltimore Center Stage



Mic	Name	Body Pack	Source	SD Rack In	Element
1	Spare Wireless	UR1	Shure Axient #1	1	Countryman E6
2	Wisdom Wireless	UR1	Shure Axient #2	2	Countryman E6
3	Passiom Wireless	UR1	Shure Axient #3	3	Countryman E6
4	Depression Wireless	UR1	Shure Axient #4	4	Countryman E6
5	Lust Wireless	UR1	Shure Axient #5	5	Countryman E6
6	Happiness Wireless	UR1	Shure Axient #6	6	Countryman E6
7	Love Wireless	UR1	Shure Axient #7	7	Countryman E6
8	Anger Wireless	UR1	Shure Axient #8	8	Countryman E6
9					
Spare 2		UR1	Freq swapped as needed	11	Countryman E7
12	Dir VoG Mic/Spare HH	HandHeld	Shure Axient #10	12	AD2/SM58*

\*Indicates item that would need to be rented.



## Mic Assignment

Sound Designer: Mikaaal Sulaiman

info@mikaal.com 561 634 0334

Freq	Sensitivity	Notes
TBD by House	-42	To Ableton ONLY
TBD by House	-42	
TBD by House	-42	
TBD by House	-42	
TBD by House	-42	
TBD by House	-42	
TBD by House	-42	
TBD by House	-42	
TBD by House	-42	
TBD by House	?	

Directed By: Steve H. Broadnax III

Revised: 8/23/19

Baltimore Center Stage



Co

Sound Designer: M

info@mikaal.com

<b>Dante OUT</b>	<b>Name</b>	<b>Box/Slot</b>	<b>Hole</b>
Dante In Ch.1	Spare Wireless D.O.		Dante IN
Dante In Ch.2	Wisdom Wireless D.O.		
Dante In Ch.3	Passiom Wireless D.O.		
Dante In Ch.4	Depression Wireless D.O.		
Dante In Ch.5	Lust Wireless D.O.		
Dante In Ch.6	Happiness Wireless D.O.		
Dante In Ch.7	Love Wireless D.O.		
Dante In Ch.8	Anger Wireless D.O.		
Dante In Ch.9	DJ Playback D.O.		
<b>Dante IN</b>	<b>Name</b>	<b>Box/Slot</b>	<b>Hole</b>
Dante Out Ch.1	Qlab 1: Main Left		Dante OUT
Dante Out Ch.2	Qlab 2: Main Right		
Dante Out Ch.3	Qlab 3: Main Center		
Dante Out Ch.4	Qlab 4: Subs		
Dante Out Ch.5	Qlab 5: Side Left		
Dante Out Ch.6	Qlab 6: Side Right		
Dante Out Ch.7	Qlab 7: Rear Left		
Dante Out Ch.8	Qlab 8: Rear Right		
Dante Out Ch.9	Qlab 9: FX Fly 1		
Dante Out Ch.10	Qlab 10: FX Fly 2		
Dante Out Ch.11	Qlab 11: FX Fly 3		
Dante Out Ch.12	Qlab 12: Deck FX Left		
Dante Out Ch.13	Qlab 13: Deck FX Right		
Dante Out Ch.14	Qlab 14: Billboard FX-L		
Dante Out Ch.15	Qlab 15: Billboard FX-R		
Dante Out Ch.16	Qlab 16: Acror Monitors		

\*Indicates item that would need to be rented.



**nsole Dante I/O**

Aikaal Sulaiman

n - 561.634.0334

<b>Dest</b>
Show Computer
<b>Dest</b>
Mix Bus 1
Mix Bus 2
Mix Bus 3
Mix Bus 4
Mix Bus 5
Mix Bus 6
Mix Bus 7
Mix Bus 8
Mix Bus 9
Mix Bus 10
Mix Bus 11
Mix Bus 12
Mix Bus 13
Mix Bus 14
Mix Bus 15
Mix Bus 16 & 17

**LX should have MIDI control of Qlab**

Directed By: Steve H. Broadnax III

Revised: 8/23/19

Baltimore Center Stage



Sound Des

**Control IP Addresses** info@mikaal.com -

	IP address	Device
	192.168.1.101	Show Computer
	192.168.1.102	Mikaal Computer
	192.168.1.103	Zack Computer
	192.168.1.104	Zack iPad

**Subnet Mask**

255.255.255.0

**Router**

	192.168.1.100	
--	---------------	--

**Dante IP Addresses**

	IP address	Device
		Show Computer
		Console

**User Names & Passwords**

Purpose	User Name	Password
Show Macbook	Kee Scott	ToaCMsound
Internet Wifi	BCS_Visitor	calvert77!

**Networking**

signer: Mikaal

Sulaiman

- 561.634.0334
<b>Note</b>

<b>Note</b>

<b>Note</b>

Directed By: Steve H. Broadnax III

Revised: 8/29/19

Baltimore Center Stage



Item	Make	Model	Quantity
Wireless Mic Elements	Countryman	E6	10
E6 Windscreens	Countryman	E6WSC	10
Speakers	Meyer	MM-4s	12
Speakers	Meyer	UB12s	2
Speakers	Meyer	UPJ	5
Speakers	Meyer	UPJunoir	2
U Brackets	Meyer	40.173.110.01	2
Handheld Mic	Shure	AD2/SM58	1

**Mic Assignment**

Sound Designer: Mikaaal Sulaiman

info@mikaal.com - 561.634.0334

**Note**

In order to match Syracuse production. 2 Spares included.  
Should be in Cocoa color.

For frontfills & Actor Floor Monitors

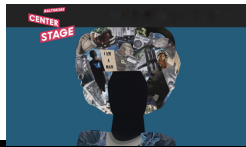
For Billboard FX

For upstage FX speakers

Proscenium Actor Monitors

For Director VoG and spare after tech.

Directed By: Steve H. Broadnax III  
Revised: 8/29/2019  
Baltimore Center Stage



Item	Quantity
Display Monitor	1
Display Monitor	1
Remote Desktop Connection	1
Internet Connection	1
Connection of PM5D	1
Powered Speaker or Studio Monitor	1
Designer Feed to Console	1
Telephone style com receiver	1
Headset Com	1
Little Life or Equivalent	2
Dedicated Power Strip	1
Small Trash Can	1

Sound Tech Table should be placed house center, at

### **Tech Table Request**

Sound Designer: Mikhaal Sulaiman  
info@mikaal.com - 561.634.0334

<b>Note</b>
Minimum of 25", USB-C or HDMI cable connected
Minimum of 25", DVI or HDMI cable connected
Via Hardline Cat5
Via Hardline Cat5 or <u>high speed</u> wifi
USB over Cat5 or KVM so that Asst Designer can edit from his computer.
8" woofer or less. Connected TRS for interface at tech table
Stereo 1/4 tails (L/R) to connect Designer interface to system
with pack for designer.
with pack for assistant.
Powerstrip with only sound tech table connections.
Could also be replaced with bag gaffed to table.

approximately halfway up the audience.